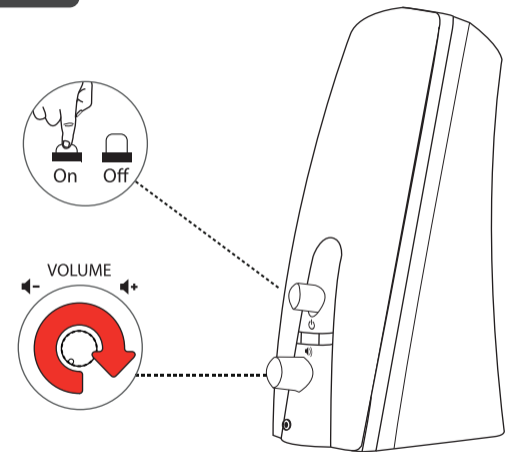
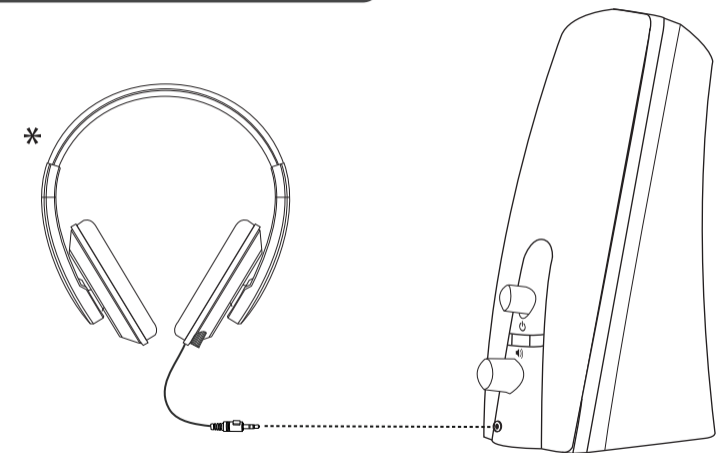


4. Volume control



5. Connect headphone



* Not Included

FAQ

Frequently asked questions
www.trust.com/16697/faq

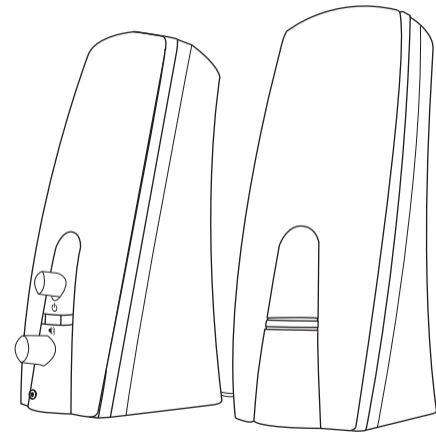
Trust International BV
Laan van Barcelona 600
3317DD, Dordrecht, NL

© 28-06-2016 Trust International B.V. All rights reserved.

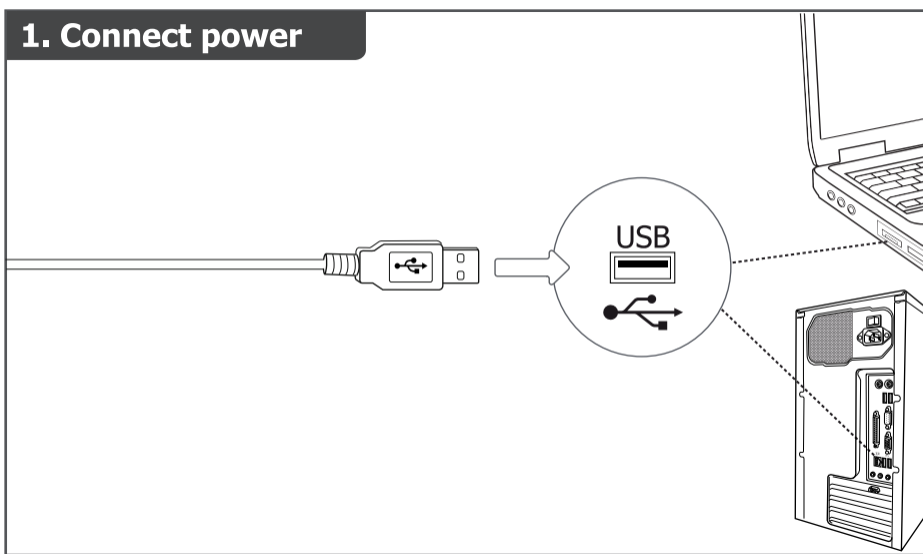
Trust
2.0 Speaker set



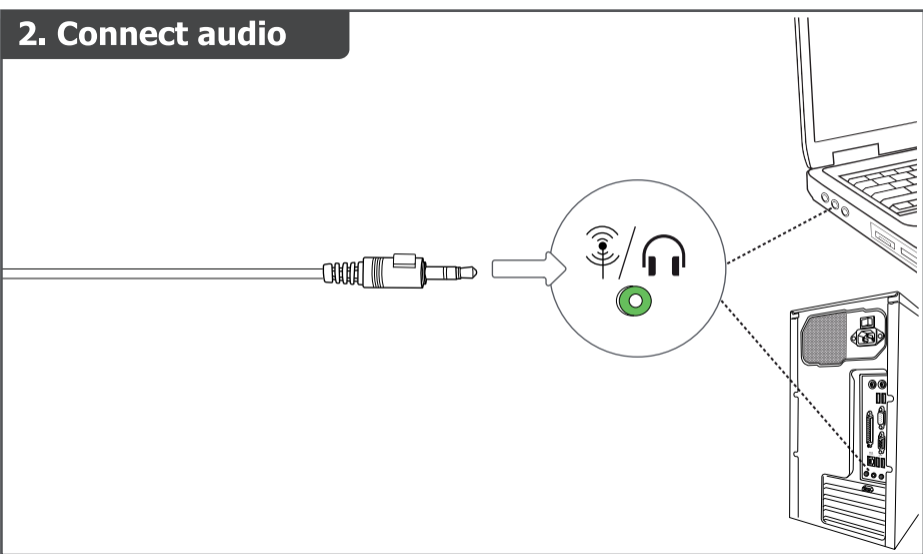
Quick Installation Guide



1. Connect power

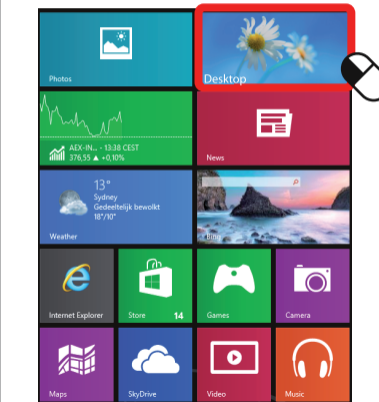


2. Connect audio



3. Installation - Windows 10/8/7/Vista

Only for Windows 8



Windows 10/7/Vista
Start here

1



2

